

ASPECT® v3.04

Summary

ASPECT software and firmware have been updated to make Schedules and Alarms easier to use, and Trendlogs configured to provide a user with more control. Also, support for Security communication standards when downloading Office365 calendars has been enhanced, and Project deployment is quicker and easier.

Background

As part of ABB's policy of continuous improvement, **ASPECT** has been enhanced to make it easier to use and more secure.

Features

1. Schedules now support the latest calendar standards and are now even easier to use and distribute.
2. Trendlogs can be configured to provide a user with more control over how they view a large number of point values.
3. Users can now manage and view alarm data much more easily.
4. Administrators now have greater control over the users of an **ASPECT** BMS system.
5. The latest security communication standards are supported including LDAP and OATH2.
6. Projects can be deployed more quickly and easily.

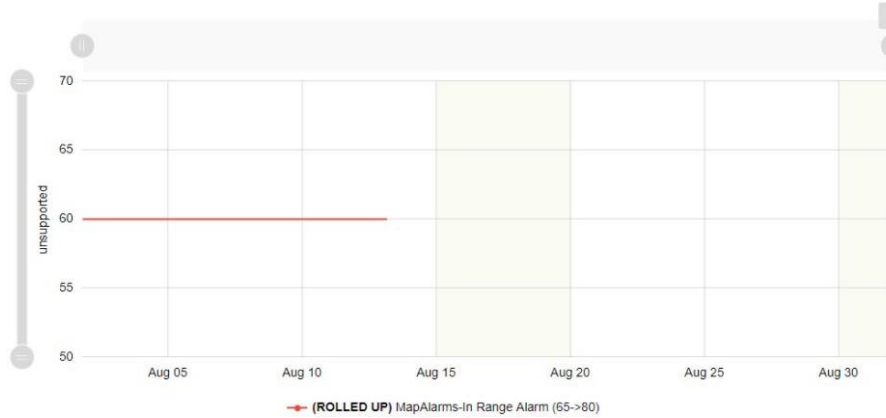
ENHANCEMENTS

SCHEDULING:

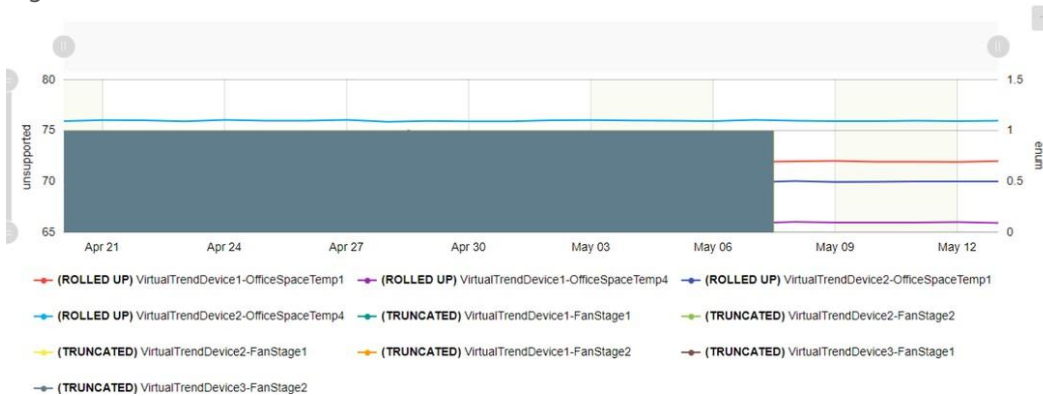
- Schedules have been enhanced so that they can expose the amount of time until the next or time since previous transition state offering project designers the ability to fine-tune equipment startup and setback times. See the new Schedule Transitions element on the Time/Rate diagram tab.
- **ASPECT**'s On-Board Calendaring service option has been upgraded to the current version to support iCal calendar scheduling from an Enterprise or Nexus device to offer customer alternatives to Office365 / Exchange or Google calendars.
- A new "Simple Map Schedule" type has been added that allows users to quickly configure on/off schedules and to utilize the time to next and time since last features provided from the Schedule Transitions element.
- An option to bulk-distribute schedule exceptions is now available to allow exception events to be distributed without disturbing recurring local weekly schedules allowing for easy modifications to holiday lists across multiple locations with different weekly scheduled hours.

TRENDING:

- In previous versions of **ASPECT**, trends displayed via the **AdHOC Trend UI** were automatically summarized when the number of return rows exceeded 2,000. A configuration option called “**Trend Rollup Threshold**” has been added to the Trend Subsystem **Expert** tab to make this value user selectable.
- If a request for a trend requires summarization there will now be a visual indication.



- Digital Trends are no longer allowed to be summarized i.e. “**Rolled Up**”. The user will see the following message if a digital trend has been truncated.



ALARMING:

- Alarm values displayed in the **Alarm Console** will now be displayed as the enumerated text if configured appropriately rather than a simple display of the enumerated integer value.
- Alarm values configured to append unit, e.g. °F, will now be displayed in the alarm console with the appropriate unit suffix.
- The **ASPECT Alarm Console** has been enhanced to allow end-users to mask selected columns to reduce the clutter of any column that is perceived as unnecessary. A default list of columns can be preconfigured on the **Alarm Subsystem** config page.
- **Aspect resource** tab will now accurately reflect the total count of alarmable points in a project.

Active Alarms

Toggle Visible Columns: Date Application Name Description Value Priority Status

Date	Application	Name	Description	Value	Priority	Status
2020-08-13 12:16:07	ICAlarms_TestingNetworkMapAlarms	OutOfRangeAlarm	Out Of Range Test (55->80)	0	100	OK OK
2020-08-13 12:16:07	ICAlarms_TestingNetworkMapAlarms	LowLimitAlarm	Low Limit Test (Alarm when<=32)	0	100	OK OK
2020-08-13 12:16:05	ICAlarms_TestingNetworkMapAlarms	ModMatchAlarm	Must match Current Set Point Alarm	49.9	100	OK OK

- **ASPECT** now allows the sorting of Alarm History information across multiple pages of alarm history listings.
- Alarms display timestamps in the time zone of the target device not the time zone of the user's P.C.

SECURITY:

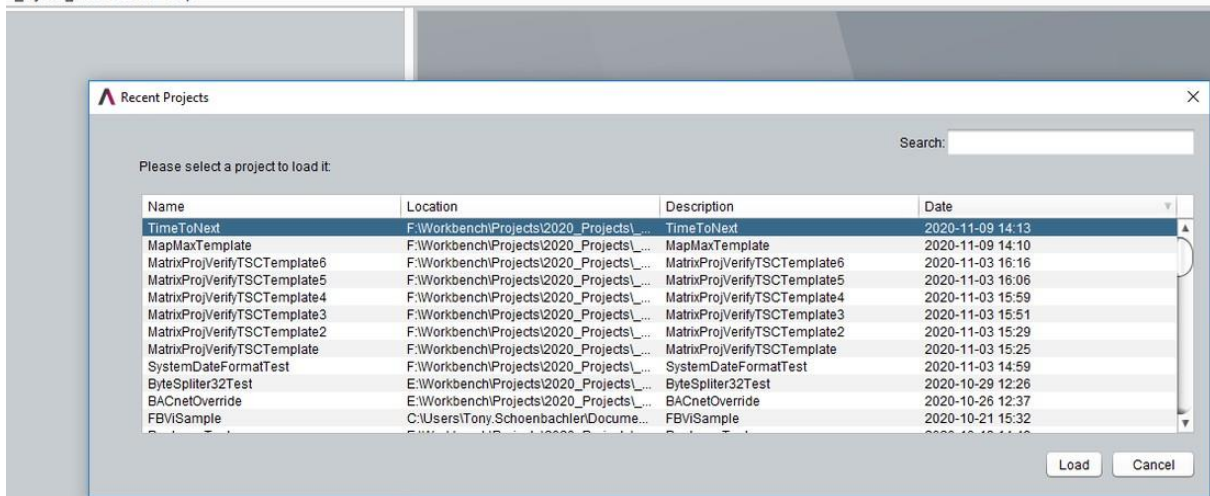
- Access to edit Schedules can now be controlled by group access settings on a per schedule basis. Previously scheduled group access configured from the Schedule Subsystem was considered global to all schedules in a project.
- Aspect now supports OAuth2 authentication for Office365 / Exchange iCal calendars providing a secure encrypted connection for collection iCal calendar schedules.
- Aspect Groups/Users can now be edited from the secure SSL port 443/14443 and are appropriately re-authenticated via popup menu when the edit page is displayed.
- Misconfigured LDAP connector will no longer allow Guest access to the **ASPECT** / **ngAdmin** portal.
- Aspect now provides fine-grained control of group access for bulk change edits so non-admin group members can now bulk edit if appropriately configured.

GENERAL USABILITY HIGHLIGHTS:

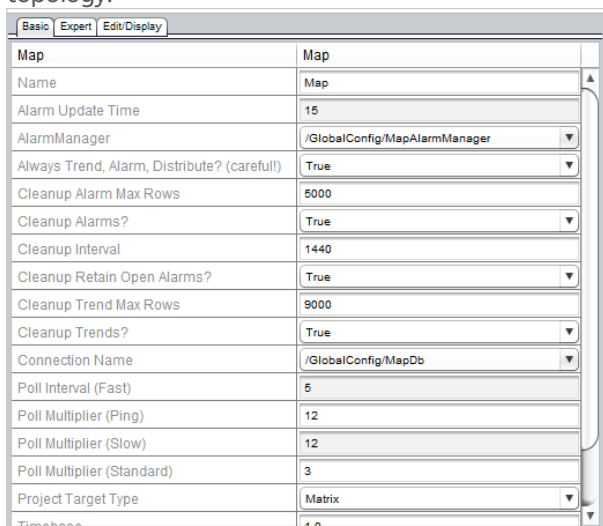
- **ASPECT** deployment has been streamlined to decrease the time required to fully deploy a project using the new Light Weight Deployment option. Enabled by default, this option will interrogate an **ASPECT** Control Engine target for revision state of current dependencies and only deploy files that are required for update reducing the time required to deploy a typical **ASPECT** Project.
- **ASPECT** now has a fully sortable and searchable Project History listing to keep track of the location of the last 1000 projects that were opened on a particular PC. Accessible from the main Project menu option or by pressing [F5] before opening an **ASPECT** project.

Aspect Studio Release 3.04.00-a06

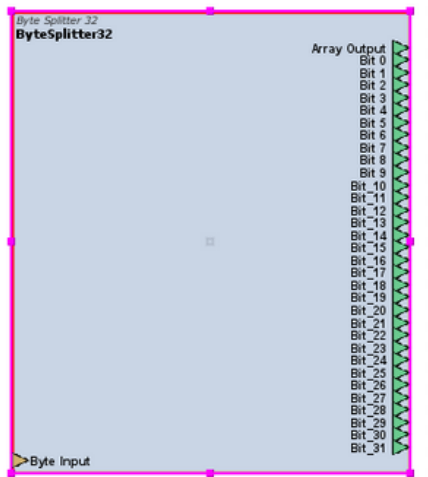
Project Tools Window Help



- The time between device pings can now be controlled at the Global, Network, or Device level in any network topology. As a multiple of the fast ping time, this value is configured using the “Poll Multiplier (Ping)” property. This value will default to be equal to the “Poll Multiplier (Slow)” property at the Map, Network, and Device nodes in a network topology.



- Proxied eMap requests for alarms will now ignore offline devices to reduce network traffic load.
- Aspect has a new 32 Bit Byte Splitter to evaluate 4 bytes unsigned integers, adding 32-bit masks for diagram view logic programming supplementing the current 8-bit Byte Splitter element.



- **ASPECT Enterprise** will now support configuration for two ethernet connections for dual IP address access to an **ASPECT Enterprise** target.
- The polling rate for Graphics can now be adjusted from 5 seconds to support a larger number of points per graphic without taxing the CPU on **MATRIX Series** or **NEXUS Series** targets. Graphics Subsystem

Submit Back Property Detail Level Low

Basic (3) Expert (6)

Debug Level
No debug (0)

Friendly Name
Graphics Subsystem

ID Path

Poll Rate
5

- Network Device status will now be displayed with corresponding color codes, red for offline and gray for offline

Display Class Normal

BACnet Net1

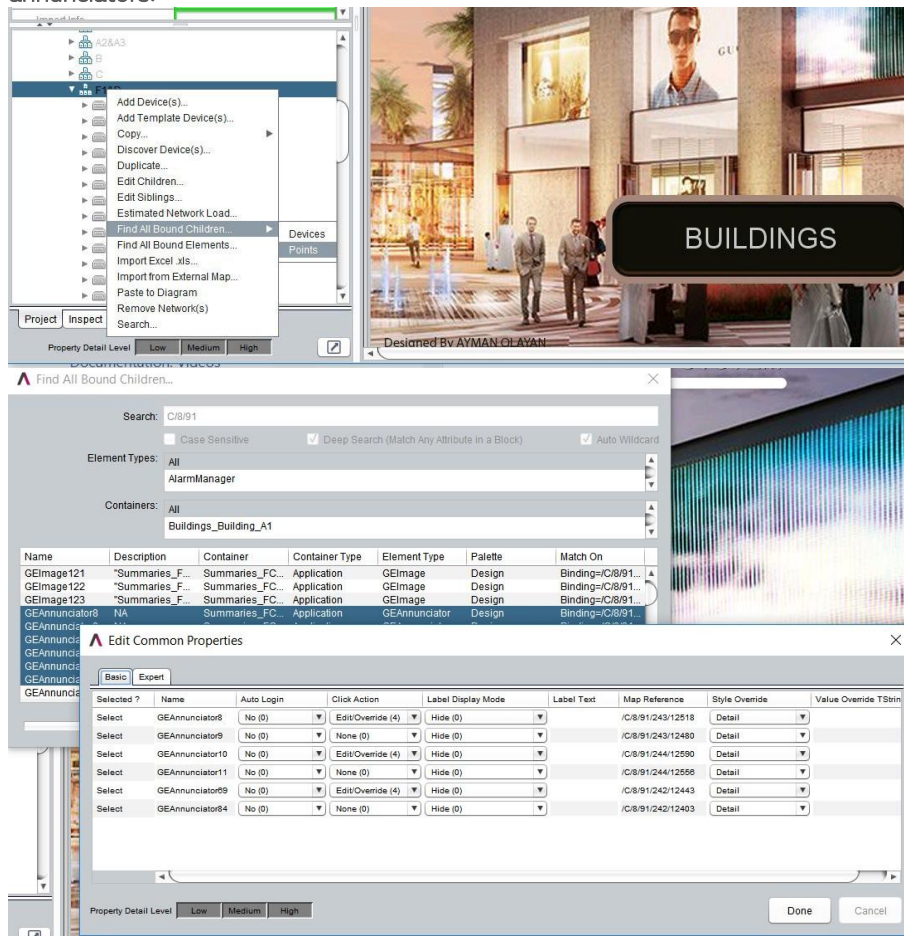
- BACnet IP (500) Online
- Building A Offline
- BACnet IP (500) Disabled

Configure

Add Child Node

Child Node Name

- **ASPECT** now provides a search option to find bound child points and related graphic element targets. This feature allows an **ASPECT** engineer to find all points that are bound to a specific graphic element or group of elements and bulk edit graphics properties or the point bound to the element. For example, changing the Style for a group of annunciators.



- A webservice restart option has been added to **NGAdmin** in case configuration options change or upgrades require a manual restart.

IMPROVEMENTS

- ASP-3607** Support has been added for time-to-next and time-since-previous events in ASPECT/Unitron local schedules.
- ASP-4572** In the Alarm Viewer it is now possible to assign enumerated text or engineering units for the value of an Alarm.
- ASP-4573** An option has been added to mask which columns are displayed on the H5 Alarm Viewer page.
- ASP-4850** On Network Status page time is now prefixed with 'Last updated:'.
- ASP-4989** Alarm History sort function has been added.
- ASP-5000** An option has been added to configure ping times with a separate multiplier (at Map/Network/Device levels - All Protocols).
- ASP-5047** Project load history list has been added to ASPECT Studio.
- ASP-5079** Duplicated "Set Time" option has been removed from ngAdmin to reduce configuration ambiguity.
- ASP-5143** ASPECT Single Sign On documentation has been enhanced for readability and faster setup.
- ASP-5165** A new Diagram element has been added that will split up to 32 bits from an unsigned input value.
- ASP-5206** ASPECT Enterprise now supports dual IP addresses for servers with multiple NIC cards.
- ASP-5227** Initial load time for ngAdmin has been improved by reducing the size of browser UI dependencies.
- ASP-5228** New time setting menu options for Saudi Arabia Riyadh have been added for NEXUS and Enterprise device targets.
- ASP-5231** ASPECT now has a global configuration option in the Graphics Subsystem to control the polling rate of graphics to efficiently utilize network bandwidth.
- ASP-5240** A Project can now be configured to toggle SMTP debugging to aid in troubleshooting when setting up email notification in ASPECT.
- ASP-5250** The Baikal onboard CalDAV calendaring server installation option has been updated for use with PHP 7.3 and mated with the Thunderbird email client for calendar schedule editing from an ASPECT Enterprise or NEXUS device target.
- ASP-5273** The Trend Subsystem has been modified to allow the trend rollup threshold to be configurable.
- ASP-5274** ngAdmin now provides visual indication on the trend graph that ASPECT has automatically "Rolled Up" a trend response for summary display.
- ASP-5275** The Baikal On-Board Calendaring server can now be updated from the WebUI to the current PHP 7.3 compatible version of 0.6.1.
- ASP-5286** A new "Simple Combo Schedule" schedule type has been added for use with the new Time to Next and Time Since Last feature in ASPECT.
- ASP-5287** A new Simple Schedule Config Panel has been added for initial configuration of Simple Combo Schedules from ASPECT Studio.
- ASP-5292** BACnet audit logs now list current and previous values when going into override state and when relinquishing a previously overridden value.
- ASP-5302** The ngAdmin System Browser now gives visual color indication of online, offline and disabled statuses of devices by default.
- ASP-5304** Bulk Schedule distribution can now be prequalified to distribute a Full schedule, only the Exception List associated with a schedule or the Weekly Schedule without exceptions.
- ASP-5313** The Device ID property on a Map Device is now located next to the Device Address and is exposed at the "Low" edit level.
- ASP-5314** The "ID Path" property for any point is now visible when editing at the "Low" property edit level.
- ASP-5320** Support has been added for OAuth 2.0 Office365 Exchange Calendars for ASPECT iCal Scheduling.
- ASP-5321** Exception logging has been enhanced to include Pushover notification exceptions.
- ASP-5324** A new Map Search option has been added to find bound "Child" points and a right click option to edit the selected "bound" network point properties.

- ASP-5325** A "Light Weight" deployment option has been added to **ASPECT Studio**.
- ASP-5326** eMap Proxied Alarm requests now filter offline devices to reduce network traffic load.
- ASP-5330** A Data validation check has been added to ensure that poll rate parameters cannot be misconfigured and to adjust fatal property values.
- ASP-5386** A new option has been added to restart the webserver from ngAdmin.
- ASP-5393** Support has been added for the **European Small Business Solution**, one **MATRIX** and one **Cylon BACnet** device for scheduling.

RESOLVED ISSUES

- ASP-4685** Discovered BACnet objects with an empty object-name property are no longer imported with an empty reference name.
- ASP-4706** ContextGrabber now adds ID_PATH property to the value object.
- ASP-4849** After panic stop NTP now automatically restarts (All target platforms).
- ASP-4853** Importing a JSON file no longer resets previously added Targets.
- ASP-4890** Edit levels on Schedules now works properly.
- ASP-4907** Lookback Interval now accepts values that are multipliers of 10.
- ASP-4914** Misconfigured LDAP servers no longer allow guest access to ngAdmin and WebUI.
- ASP-4929** Import from EC and Close option is no longer greyed-out when opening a project in **ASPECT Studio**.
- ASP-4943** An issue has been fixed where license violations had been intermittently displayed on points for no reason.
- ASP-4959** Licensed Devices in System Information Page shows percentages with fewer digits.
- ASP-4990** Bulk edit Search function now works as expected.
- ASP-5024** Historical Alarms now displays the timezone set on WebUI rather than that of the PC.
- ASP-5053** The ability to add, remove, edit connectors while editing an Application in **ASPECT Studio** has been restored.
- ASP-5072** Bulk change group edit permissions are now working when configured from the Security subsystem interface
- ASP-5081** Style display order is now persisted in Style dropdown in the Annunciator /Label/Link elements
- ASP-5100** After sorting saved trends in ng-admin, the selected trends data will now correctly render in the graph element when the user clicks on any of the newly-sorted saved trends.
- ASP-5105** Incorrectly configured Security driver no longer throws Null pointer exceptions.
- ASP-5120** All buttons in ng-admin now render in the appropriate shade of "Cylon Green".
- ASP-5164** All HTTPS web UI routes now work on HTTPS enabled sites.
- ASP-5168** **ASPECT Studio** resources tab now shows the correct count of alarm points in a project.
- ASP-5181** All Map 'Service' properties are now propagated to all targets when deployed. Service properties imported from a target are also correctly mapped in **ASPECT Studio**.
- ASP-5200** BitKinex WebDAV Client used to copy files to the Local Storage Area on an **ASPECT** target no longer fails with a 401 error during authentication.
- ASP-5203** All Trends now refresh data if any Tree/Menu item has been clicked.
- ASP-5204** Schedule Exception start date and times no longer get reset after entering End Date and Time.
- ASP-5233** **ASPECT** eMap device License counts in **ASPECT Enterprise** now correctly reflect actual ACE device counts.
- ASP-5235** A guard has been added to **ASPECT Studio** to prevent **ASECT Services** configuration nodes from being inadvertently duplicated.
- ASP-5239** Ad-Hoc Trend graphs will no longer "Rollup" i.e. summarize trends containing digital or binary sample data.
- ASP-5270** Annunciator graphic elements now respect the Background Color and Background Opacity settings of the currently selected style - issue introduced in v3.03.03.

- ASP-5301** .PNG files now render correctly when developing Graphics pages in **ASPECT Studio**.
- ASP-5306** Copy/Paste bugs in **ASPECT Studio** Graphics designer have been resolved.
- ASP-5307** Trend Graph Menu Tree element will now properly scale its container window to display relevant "sample name" text.
- ASP-5316** Advanced Element Search Query will now filter elements as selected in the search query dialog.
- ASP-5335** **ASPECT Studio** will no longer lock up when toggling live/sim if **MySQL connection manager** is not configured to connect to an accessible, live **MySQL Server**.
- ASP-5339** Bulk change feature no longer allows disparate data types between source and target change elements.
- ASP-5341** All relevant configuration files are now included in an ACE target configuration backup .tgz file.
- ASP-5353** NWS Element has been modified to use the new secure url endpoint for weather information from the **National Weather Service**.
- ASP-5354** Editing Groups / Users and Project Source Download options now works when SSL is enabled from the WebUI Administrators console.
- ASP-5365** The Network ID in the Network node of the Map will now default to 0 instead of blank.
- ASP-5391** Data gaps have been resolved in **Unitron** data being pushed from **ASPECT Nexus** target to **Active Energy**.

Customer Impact

Any customer wishing to take advantage of the new features should upgrade when convenient.