

# eXplore C7 and eXplore C10

Issue Date: July 3<sup>rd</sup> 2019  
 Product: eXplore/SiteGuide  
 Product Version: 3

## Summary

The existing **SiteGuide** product has been replaced by 2 new hardware platforms, in 7" and 10" form factors and renamed "**eXplore**". The term "**SiteGuide**" is now used to refer to the menu-driven user interface hosted by **CBXi** and **UC32.netK** comms controller, which can still be accessed using the **eXplore** devices. The **eXplore** touchscreen can be used with both **SiteGuide** and the **ASPECT**<sup>®</sup> interface

## Background

This change is being made in order to offer a more flexible range of touchscreen UI options.

## Features and Installation



The Cylon **eXplore** is a standalone, easily customizable, touchscreen front end for Cylon's Building Energy Management System (BEMS). **eXplore** is suitable for supervision of small sites where:

- no PC is available to run Supervisor software and
- a more attractive display than a text keypad is required.

**eXplore** has a color touchscreen and graphical presentation that is suitable for front-office end user applications.

It can be panel-mounted for local supervision (e.g. plant room), or can be wall mounted (e.g. front office, reception, boardroom etc.).

User-friendly and attractive interfaces are provided for viewing trendlogs, adjusting time schedules and setpoints.

### SiteGuide / Aspect with eXplore

The **eXplore** touchscreen can be used with both the **SiteGuide** menu-driven user interface or the **ASPECT**<sup>®</sup> HTML5 interface.

#### SiteGuide UI

The **SiteGuide** user interface is based on a menu structure (created for each BMS Site by the System Integrator) using simple drag & drop operation in the **CXpro<sup>HD</sup>/CEC Keypad Builder** Interface.

The menu structure is downloaded to the target **CBXi-8R8(-H)** IP Controller by the **CXpro<sup>HD</sup>** Keypad Builder Interface or **UC32.netK** Communications Controller by the **CEC Keypad Builder** Interface.

Once the **eXplore** touchscreen is configured with that Controller as its target, it will automatically read the **SiteGuide** UI from the Controller and display it.

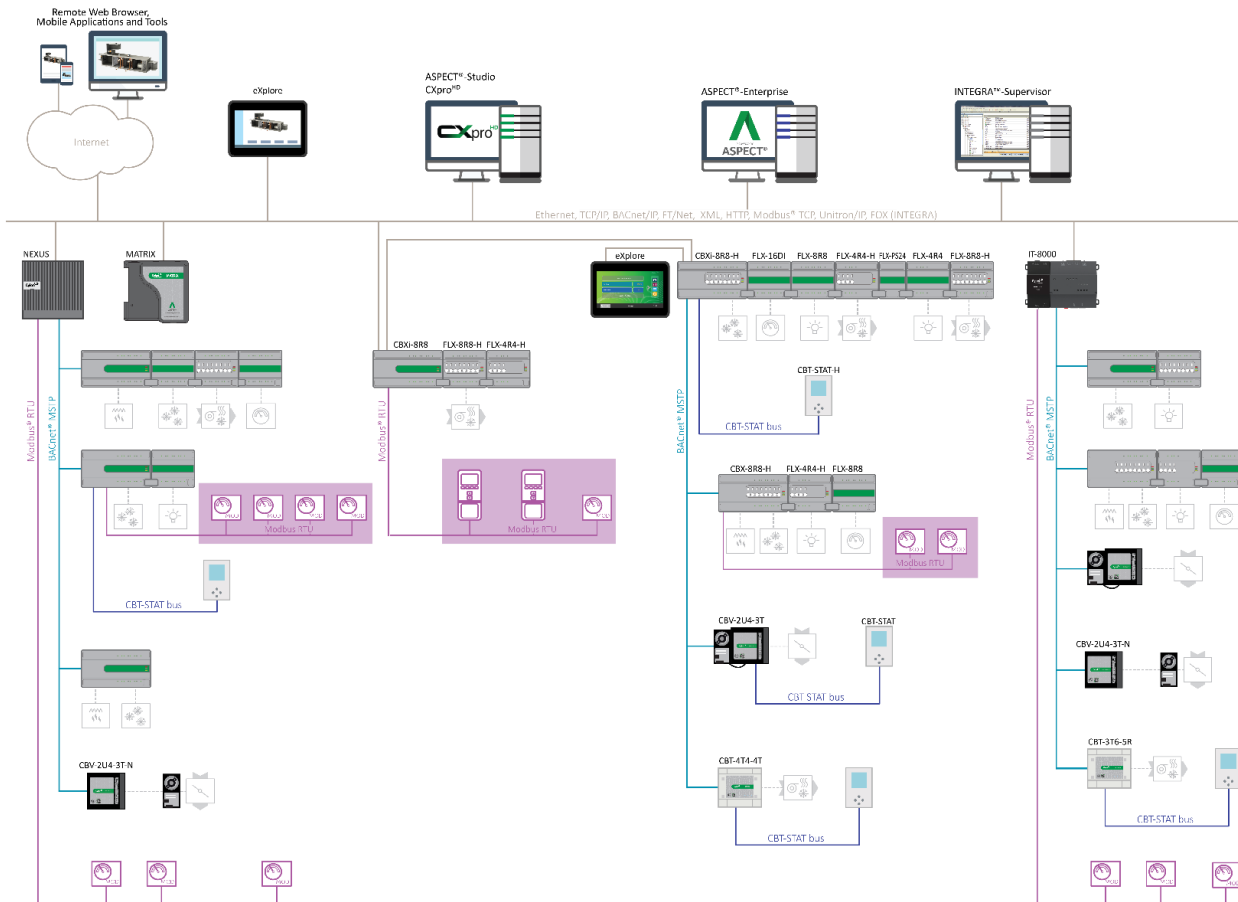


### ASPECT HTML5 UI

If **eXplore** is configured to target a **NEXUS Series** or other **ASPECT®** Control Engine (ACE) then it can display any page within the ACE's configured HTML5 UI, giving a more flexible and feature-rich user experience.

**ASPECT®** UI for **eXplore** should be configured for 7" or 10" screen size at the design stage.

## eXplore in the Cylon system



## Customer Impact

Customers with touchscreen applications will receive the new **eXplore** platform in place of the legacy **SiteGuide** touchscreen hardware, for orders placed after July 1<sup>st</sup> 2019.

**Note:** If **eXplore** is used as a replacement for existing installed **SiteGuide** hardware, the installation/mounting considerations will need be adapted.



Subject to change without notice  
©2019 Cylon Controls  
All Rights Reserved

[WWW.CYLON.COM](http://WWW.CYLON.COM)

B0260 rev 2  
Issued by Cylon Product Development