

ASPECT® v3.03.03

Issue Date: 22 January, 2020

Product: ASPECT

Product Version: 3.03.03

Summary

This update addresses graphics issues and offers **ASPECT-Studio**, Modbus, Graphics and Security improvements

Background

This is a maintenance update for the **ASPECT v3.03.01** revision.

Features and Installation

All files relevant to this release can be found on your region's support site:

- In North America see the [Cylon dealer toolbox](#).
- In Europe / ROW see support.cylon.com on the **ASPECT® 3** page in the **Software Download** section.

Installation

Upgrading to **ASPECT v3.03.03** requires a minimum installed version of **v3.02.00**. You must upgrade the firmware of your existing **ASPECT** target (**MATRIX Series**, **NEXUS Series**, **ASPECT-Facility™**, **ASPECT-Enterprise**) using the **System Update** feature within the **WebUI** of the target.

Once the upgrade is complete, you may perform a second, once-off, firmware upgrade using the “**aspect_security_upgrade**” file for your target, via the same **System Update** feature. This upgrade is not mandatory but is strongly recommended.

- | | |
|----------------------------------|--|
| • MATRIX Series: | <code>aspect_matrix_security_upgrade_3.03.03.aam</code> |
| • NEXUS Series: | <code>aspect_nexus_facility_enterptise_security_upgrade_3.03.03.aam</code> |
| • ASPECT-Facility Series: | <code>aspect_nexus_facility_enterptise_security_upgrade_3.03.03.aam</code> |
| • ASPECT-Enterprise: | <code>aspect_nexus_facility_enterptise_security_upgrade_3.03.03.aam</code> |

Note: Before commencing any firmware upgrade it is always recommended to download a backup using the **System Administration > Backup/Restore** feature.

Once your target's firmware has been updated, please download the project source and do a full redeployment - after synchronizing the **map configuration database** from the updated **ASPECT Control Engine (ACE)** target. This process **must** be done to ensure your project files receive all enhancements and updated drivers included as part of this maintenance release.

In the unlikely event that you need to roll back to your previous version, i.e. a version between **v3.02.00** and **v3.03.01**, you must first apply the “**aspect_downgrade_php**” file for your target, and then repeating the original Installation process for the previous version.



Improvements

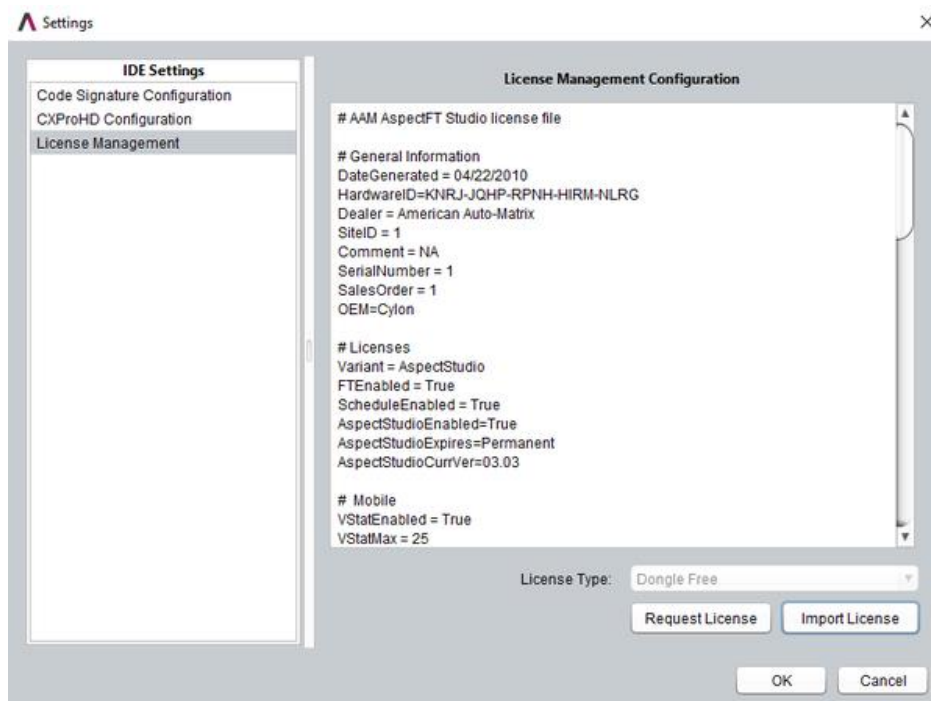
Studio Improvements

Launch CXpro^{HD} from Studio


CXpro^{HD} can now be launched from any **Device** or **Point** that has been imported to **ASPECT**. When **CXpro^{HD}** is launched the targeted **Device** will automatically be displayed in the **Strategy Editor**.

Support Dongle Free Licensing in Studio (US only)

Dongle licenses are no longer required in **ASPECT**. Users can now request a new software license for **ASPECT-Studio** from Cylon, and once installed **ASPECT-Studio** can run in Dongle Free mode. **ASPECT-Studio** continues to support the Dongle License model using the **Sentinel SafeNet** dongle. If you have a valid Dongle License file and a working dongle, it will continue to function as it did for pre-Dongle-Free versions of **ASPECT-Studio**.



Live Simulation

When **simulation** is active in **ASPECT-Studio**  the **Engineering** button automatically toggles to preview mode



, and is disabled until **simulation** is deactivated, to ensure that values will display on a **graphic**.

Trend Table Name Handling

MySQL database server does not support table or column names with more than 64 characters. Up until now, there was no way for **ASPECT** users to know that this was the case. Now, any such database violations that would prevent trending are displayed in the **resource usages** in **ASPECT-Studio** and **ngAdmin**. Clicking on one of these warning rows in **ASPECT-Studio** will open the **properties** for the relevant **device** or **point**, allowing the user to correct the reference name:

| Name | Count | Max | Saturation | Status |
|---|-------|------|------------|--------|
| Total Points | 3 | 2500 | 0.12% | |
| Background Points | 1 | 1000 | 0.1% | |
| Alarm Points | 0 | 250 | 0% | |
| Trend Tables | 1 | 200 | 0.5% | |
| Map Graphics | 11 | 100 | 11% | |
| Point Containers | 2 | 100 | 2% | |
| Reference Path/Name too long for trend table: | | | | |
| Device: MTTrend_Building_1_Manufacturing_and_Warehouse_Network_Tempera... | 90 | 64 | | |
| Point: Outside_temperature_sensor_in_the_north_east_corner_above_reception] | 67 | 64 | | |

Values represent resource limits not target license limits

Project | Inspect | Trace | Resources

A similar table is shown in **ngAdmin**, but is accessed by selecting Utilities > System Information > Project Sizing (drop-down):



Modbus Improvements

Option to set 2 stop bits on a Modbus RS485 port

A configuration option is now available in the UI to set 2 stop bits on a Modbus RS485 port



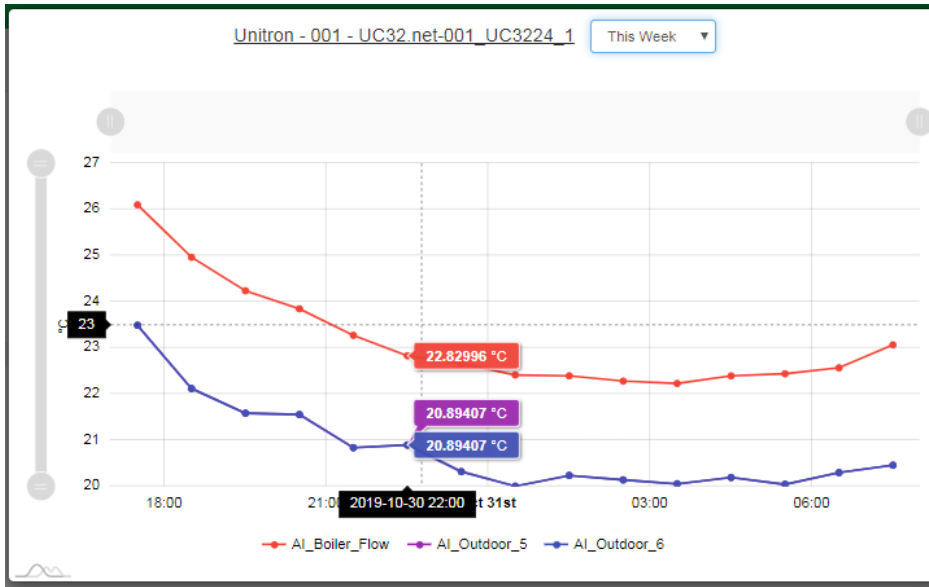
Graphics Improvements

Improved Stability

Annunciators that are bound after a **strategy** import are no longer lost on deployment or an **ASPECT-Studio** restart. Labels/links are automatically reloaded after deployment.

Trend Click action for a Device

An **Annunciator** bound to a device with a click action for a **trend** will now show the **Device Trend** points that have **View/Trend default** property set to **True**



Trend Click action for Remote Unitron Trends

Remote Trends can now be viewed from a graphic bound to a point with a **Remote Unitron Trend**.

Security Improvements

PHP 7 Upgrade

PHP runtime on all platforms has been upgraded to the latest version (v7.3.11)

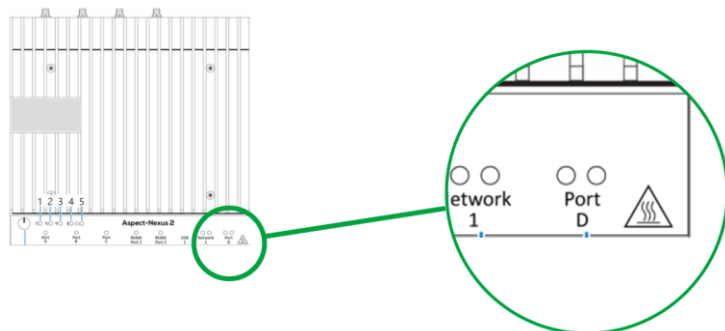
- Web UI code remains backwards compatible with **PHP 5.3** (5.4 on **MATRIX Series** devices)
- mobile/ web app (port 8080 by default) is deprecated – it is disabled in this release and will be fully removed in a future release

NEXUS Series / ASPECT-Enterprise MySQL database management tool replaced

ASPECT 3.03.03 introduces **Adminer** as the new database management tool for higher performance and enhanced security.

NEXUS Series Recovery via 2nd LAN Port

Access is allowed for recovery purposes to the second LAN Port on **NEXUS Series** devices (marked "Port D") by assigning IP Address [192.168.1.250](#).



Note: The **NEXUS Series** device must be rebooted after recovery

Integration Improvements

POST push service

A new feature has been added which enables the transfer of point values and other data from **ASPECT** to your server/application via **POST** calls. You can set up an application in **ASPECT-Studio** to periodically make **POST** calls to your own APIs. There is a wide range of configuration options to suit most **POST** requirements (content type, basic authentication, HTTP/HTTPS, host/IP, path, port)

Database push service

This feature has been enhanced to allow writing of 'trend' data to your nominated **MySQL** database. Previously, only current point values were written to the database (and overwritten with each call) but now a full history (trend) of point values can be recorded by setting " **Write Trend Data** " to **True** in the push service diagram in **ASPECT-Studio**.

Ghost Point Improvement

A new Average Operation has been added to the MapRef expressions

Resolved Issues

- ASP-5137:** The default trending property of **eMap** points is **Proxied device** when the **Satellite Trending** property is **Enabled**, **Enabled (locked)** or **Dual Trended**
- ASP-5154:** **Remote Schedules Network** property is now transferred properly during **Strategy** import/export
- ASP-5159:** Saving an **Application** with an embedded component no longer changes the component name
- ASP-5163:** Custom trended points no longer write to the **MTrend** table as well as the **CTrend** table
- ASP-5094:** Rolled-up **Trends** now display units
- ASP-5097:** On-demand **Trends** now display units
- ASP-5156:** Default **ngAdmin** external navigation is now set to the current Cylon Controls website.
- ASP-5158:** **Annunciators** now align properly relative to the selected **Parent Annunciator**

- ASP-5161:** Single Sign-On debug settings are now persisted when deployed from **ASPECT-Studio**
- ASP-5209:** Multi-read is now supported for **Unitron** comms controller with address greater than 128
- ASP-5205:** Better date / time validation for schedules
- ASP-5180:** An option has been added to the **WebUI** to set gap delay on TSC ports
- ASP-4842:** Labels are now displayed in bold both in the browser and in **ASPECT-Studio**
- ASP-4863:** Graphics no longer disappear from **Graphics Design** window after project is saved.
- ASP-5119:** Graphics no longer disappear from **Graphics Design** window after project is saved.
- ASP-4866:** The width of **GEAnnunciators** is now the same in both **ASPECT-Studio** simulation mode and a deployed graphic
- ASP-4999:** Click action for **Device Trends** now works correctly
- ASP-5036:** An option has been added to **NEXUS Series** devices to allow reset configuration from the 2nd Ethernet port
- ASP-5045:** Remote **Unitron** Trend shows in **Adhoc Trends** but not in the **Trend popup**
- ASP-5103:** **WebUI** code has been made compatible with **PHP 5.3** to **PHP 7.3** and optional upgrade bundles have been provided to upgrade runtime for security
- ASP-5111:** **ASPECT-Studio** has been modified to support a **Dongle Free** Licensing option
- ASP-5136:** **Trend Table** name handling has been improved
- ASP-5140:** **ngAdmin** graphical issue with top banner and point values has been resolved
- ASP-5142:** A configuration option has been added to set 2 stop bits on a **Modbus RS485** port
- ASP-5144:** **ASPECT-Studio** has been updated to Auto-toggle out of **Engineering Mode** to **Preview Mode** when toggling **Live Mode**
- ASP-5147:** **ngAdmin** **Project Sizing Table** format has been improved
- ASP-5148:** **GE label** and **GE Links** now get repainted automatically with the new location automatically
- ASP-5149:** Map Graphic initialization errors on **ASPECT-Studio** project load have been resolved
- ASP-5151:** Map Graphic Edit Type is no longer out of sync after location modifications of graphic elements
- ASP-5160:** An option has been added to launch **CXpro^{HD}** from **ASPECT-Studio**
- ASP-5162:** Modifying **DebugLevel** on any **Map Service** is now propagated to the target on **Deploy**.
- ASP-5172:** **ngAdmin** no longer calls **renderGraphics** on a **timebase** even if a previous request has not yet returned
- ASP-5177:** A generic **Push** API service has been added
- ASP-5178:** The **Simulation** option has been removed from **ASPECT-Studio** **Tools** menu, and also the hotkey has been removed.
- ASP-5179:** **PHPMYAdmin** has been replaced by **Adminer**
- ASP-5183:** 64 bit install bundles no longer run on 32 bit targets
- ASP-5184:** **vStat** / **Simple Mobile Web Configuration** have been removed from **WebUI**
- ASP-5185:** A schema has been added for setting a point value when value is **NULL** and/or **quality** is bad

- ASP-5187:** The **vStat** element has been removed from the **ASPECT-Studio** palette
- ASP-5189:** Reference to the **ASPECT-Studio** inbuilt **Help File** has been added on license check failure
- ASP-5194:** 64 Bit **ASPECT-Facility** upgrades no longer fail on upgrades of v3.03.02
- ASP-5198:** An option has been added to the **Database Push** service to keep (not overwrite) trend data

Customer Impact

It is recommended that users experiencing problems with the issues listed above upgrade as soon as possible. Customers interested in taking advantage of other resolutions outlined above should upgrade when convenient.